

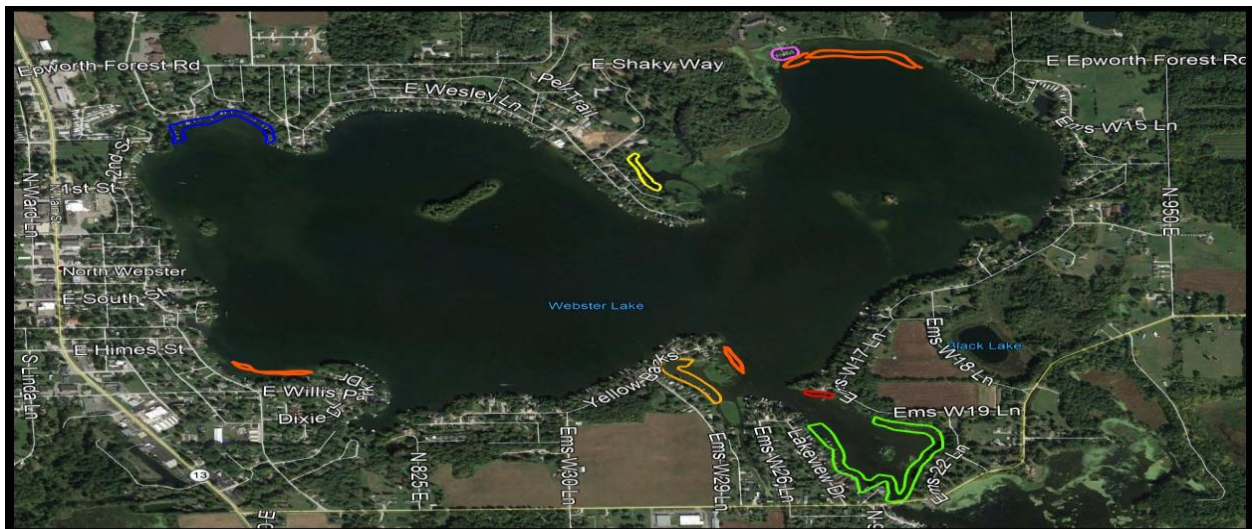


May 5, 2021
Limited Shoreline Weed Treatment
on May 6, 2021

The weeds have taken an early start this year and so has WLCA. Our herbicide contractor, Clarke Aquatic Services, was on Webster Lake approximately two weeks ago and noted significant patches of Curlyleaf Pondweed (CLP) in the blue, green, yellow, and light orange areas indicated on the map below. After Clarke's survey, additional patches of CLP were noted by WLCA in the areas marked with the red orange color. Since Clarke's first visit to the lake the CLP has overspread the top of the waters in the areas indicated on the map below impairing navigation.

For the past two weeks, the Clarke team has been working with the Department of Natural Resources to advance the application of previously approved shoreline treatments for Webster Lake. A limited shoreline weed treatment will be applied on Thursday, May 6.

It should be noted that although CLP is an invasive species, it is not considered as such on Webster Lake by the DNR and therefore costs for its treatment are not covered under the LARE grant, but rather are paid for by WLCA member dues and extra contributions to the weed fund. The DNR has been helpful in this effort by its rapid approval for this early treatment and the lessening of other treatment timing restrictions. Also please note that the areas marked in red orange indicate approximate areas of treatment and were added to Clarke's initial map by WLCA.



Until the treatment causes the CLP to subside and sink, please refrain from boating through the affected areas as much as possible. Your cooperation will help eliminate weed chop and the resulting clean up of the chop.

Membership invoices have been sent and your payments and generous contributions to the weed and fireworks funds are being received. Thank you for your investment in Webster Lake. It is very much appreciated. Treatments like this would not be possible without your support.